



CZ Prague

SK Malacky



- ❑ ALFIMEX was established in the middle of 2004 with experience of installing compressors, hydraulic and pumping equipment since 1994
- ❑ At the turn of the year 2005/06 - significant share of sales and service – MOUVEX service point
- ❑ In 2018, a new subsidiary of ALFIMEX was established in Malacky, Slovakia.
- ❑ 95% of our employees works at Alfimex from its beginning.

❑ **Typhon** with hydraulic engine

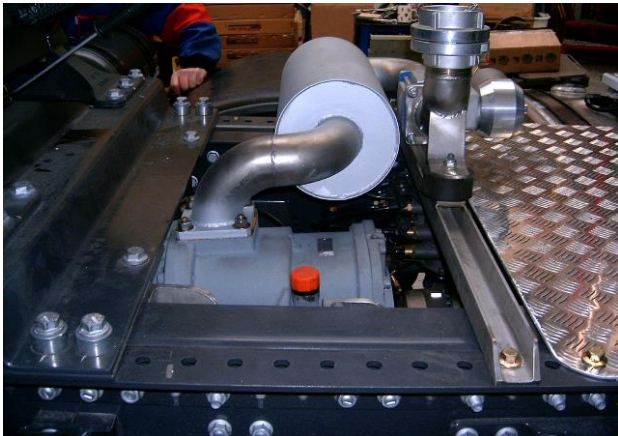
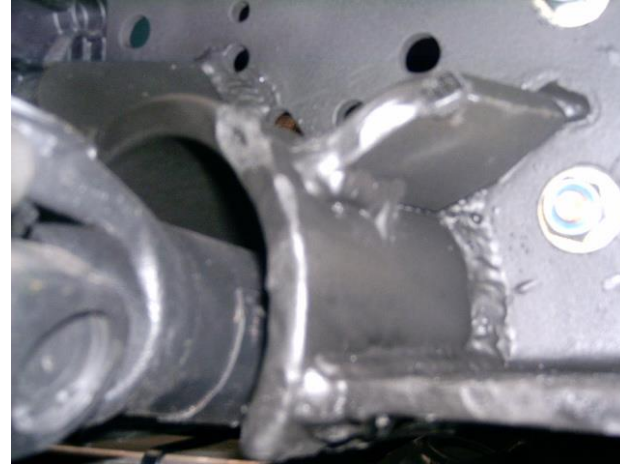
HYDRIVE 2020 oil cooler

Compact hydraulic tipping installation with air source for container emptying via rotary feeder.





- ❑ **Mistral** on 6x2 – the possibility of installation even in minimal spaces - propshaft through the frame with the Renault manufacturer's permission



❑ **B600** instalation for TATRA - agriculture application





- ❑ **B200** - for Mouvex products, there are always additional stainless steel accessories for customer satisfaction



- ❑ **MX12** – additional stainless steel covers for Mouvex products (pellet applications)





- ❑ **CC20** - PTO deceleration for optimum pump speed





- ❑ **E140** – complete stainless steel bracket and pipes for more durability





Compressors, pumps, and hydraulic systems for cargo transportation



COMPRESSOR, HYDRAULIC AND PUMPING TECHNOLOGY

**Matej Pertlik**  
Sales Manager

ALFIMEX s.r.o., Kutnohorská 369, 109 00 Praha 10, Czech Republic

Tel.: +420 274 024 227

Mobile: **+420 775 656 700**, E-mail: **[matej.pertlik@alfimex.cz](mailto:matej.pertlik@alfimex.cz)**

**[www.alfimex.cz](http://www.alfimex.cz)**

